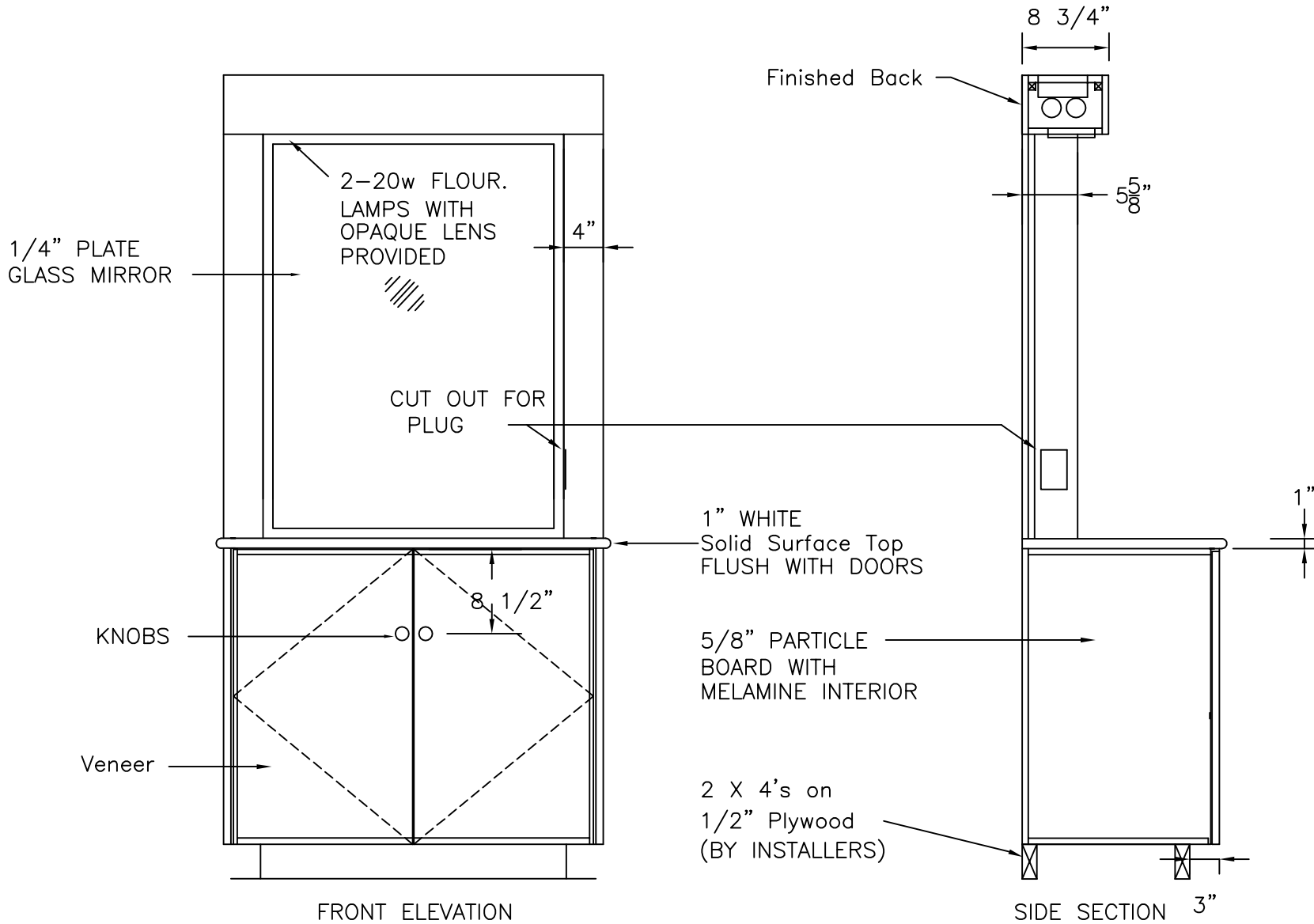


Door:  
 Finish:  
 Edgeband:  
 Hardware:

\_\_\_ at Men's Locker Room  
 \_\_\_ at Women's Locker Room

Note: All light fixture switches are to be handled with the room switch.



**HOLLMAN, INC.**  
 1825 Walnut Hill Lane, Irving, TX 75038  
 P: 972/331-2800 F: 972/331-2921

# Grooming Station

DATE:	APPROVED:	DRAWN BY:
PROJECT:		
		DRAWING NO. GS