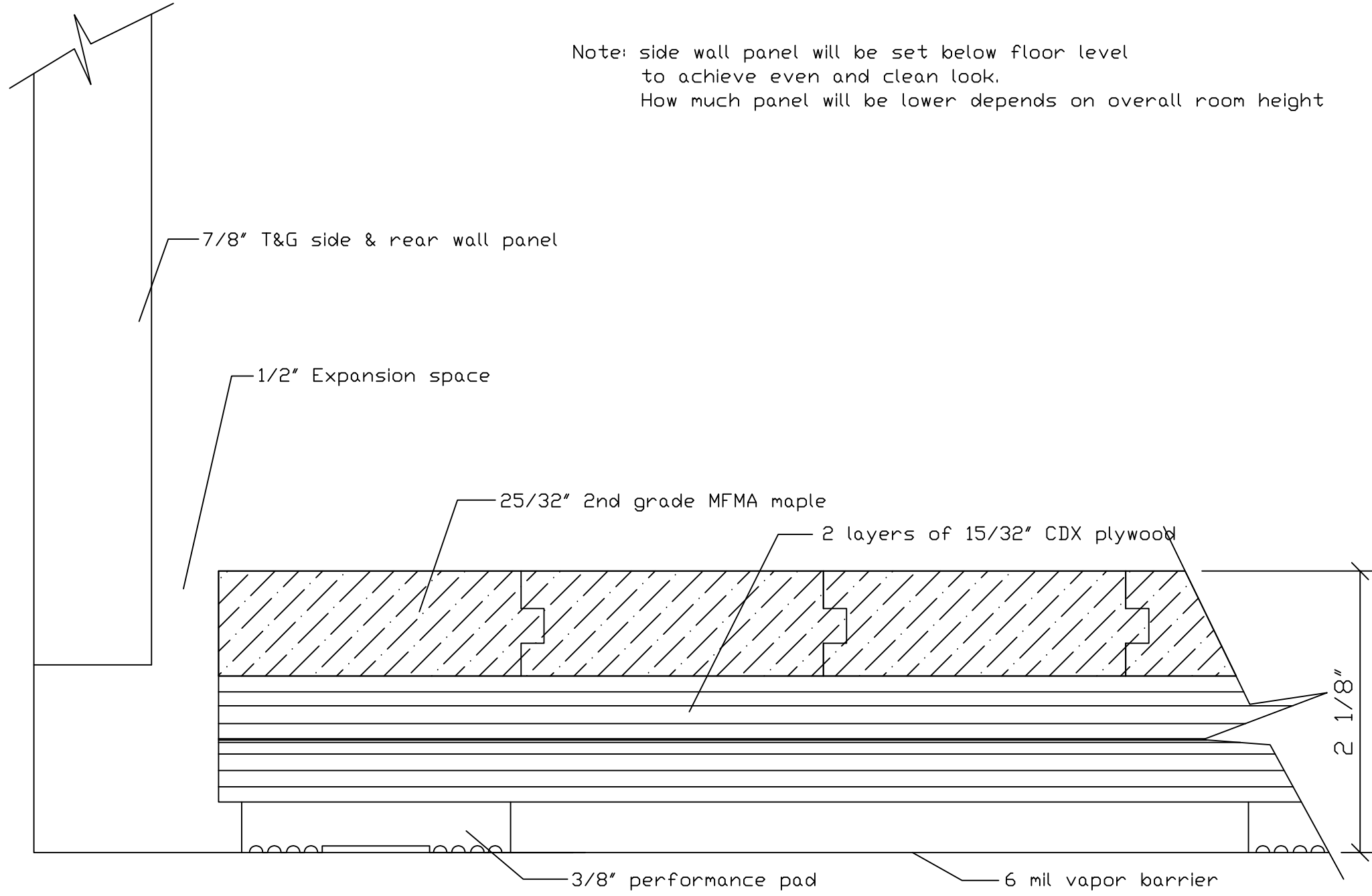


Note: side wall panel will be set below floor level to achieve even and clean look.
 How much panel will be lower depends on overall room height



HOLLMAN, INC.
 1825 Walnut Hill Lane, Irving, TX 75038
 P: 972/331-2800 F: 972/331-2921

Dbl plywood Floor System
 for Racquetball/Squash court

| | | |
|-------------------------|-------------|------------------|
| DATE: 1/21/03 | APPROVED: | DRAWN BY: Tom |
| PROJECT: Roosevelt Park | | |
| SCALE: 1-1 | DRAWING NO. | |