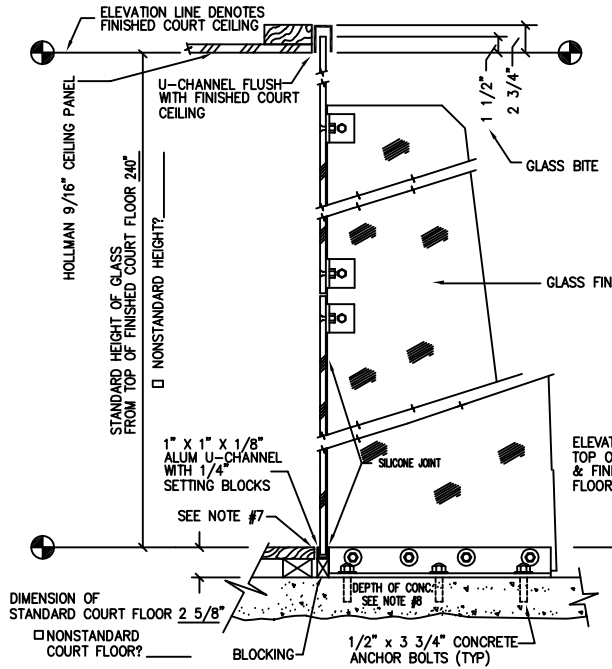


STANDARD SECTION "B"

FLAT SLAB (STANDARD FLOOR/FIN RELATIONSHIP)

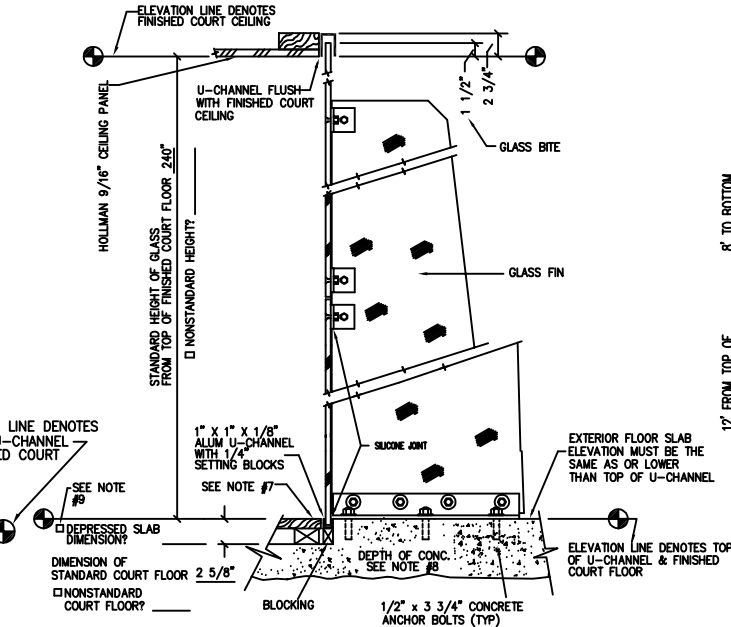
- ** SEE ALTERNATE SECTION "B" FOR OTHER FLOOR/FIN RELATIONSHIP
- ** MUST CHOOSE STANDARD OR ALTERNATE SECTION "B" OR PROVIDE ACTUAL JOB SITE FLOOR/FIN RELATIONSHIP



ALTERNATE SECTION "B"

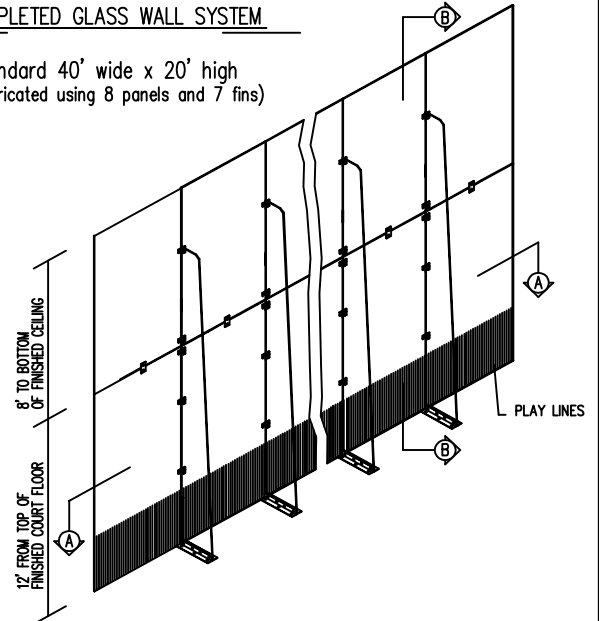
RECESSED SLAB (ALTERNATE FLOOR/FIN RELATIONSHIP)

- ** SEE STANDARD SECTION "B" FOR OTHER FLOOR/FIN RELATIONSHIP
- ** MUST CHOOSE STANDARD OR ALTERNATE SECTION "B" OR PROVIDE ACTUAL JOB SITE FLOOR/FIN RELATIONSHIP



COMPLETED GLASS WALL SYSTEM

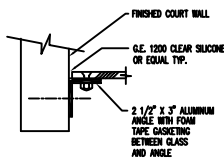
Standard 40' wide x 20' high
(fabricated using 8 panels and 7 fins)



GENERAL NOTES

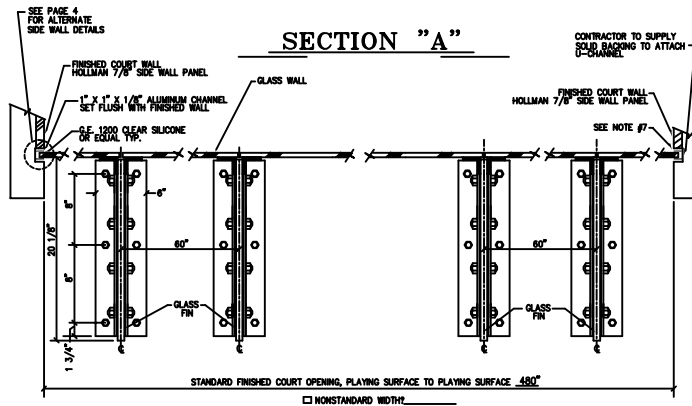
UNLESS OTHERWISE NOTED:

1. ALL GLASS IS 1/2" CLEAR TEMPERED.
2. PLAY LINES ARE 1/8" WIDE, 1" ON CENTER AND 30" HIGH.
3. DOORS: N/A
4. ALL FASTENERS TO ATTACH ALUMINUM ANGLE/CHANNEL TO SUBSTRATE BY INSTALLER.
5. ALL GLASS CONNECTION FITTINGS ARE BLACK HIGH TENSILE POLYURETHANE.
6. ALTEMPCO GLASS WALLS MEET AND/OR EXCEED THE BOCA REQUIREMENTS.
7. DIFFERENT TYPES OF COURT AND FLOOR SYSTEMS MAY REQUIRE EXPANSION SPACING BETWEEN GLASS WALL, U-CHANNEL AND COURT OR FLOOR SYSTEM. CHECK WITH COURT AND FLOORING MANUFACTURERS.
8. CONCRETE DEPTH UNDER GLASS WALLS & POSTS MUST BE MINIMUM 4" AND CLEAR OF ALL REINFORCING ROD.
9. TYPICALLY FLOOR SLAB DEPRESSION IS SAME DIMENSION AS FINISHED COURT FLOOR.



DETAIL 1
(ALTERNATE SIDE WALL CONFIGURATION)

SECTION "A"



CHECK BOX IF DIMENSIONS OR ALTERNATES ARE NOT STANDARD.

NOTE: IT IS THE CLIENT'S RESPONSIBILITY TO INSURE THE DRAWING'S ACCURACY AND COMPLETENESS.

ALTEMPCO a division of Hollman, Inc.	
CLIENT:	
PROJECT:	
STANDARD 20' X 20'	36" DOOR
BACK WALL - BOTTOM LOADED	
REVISIONS:	DRAWN BY: APPROVED BY: DATE ISSUED: SCALE: SHEET NUMBER: