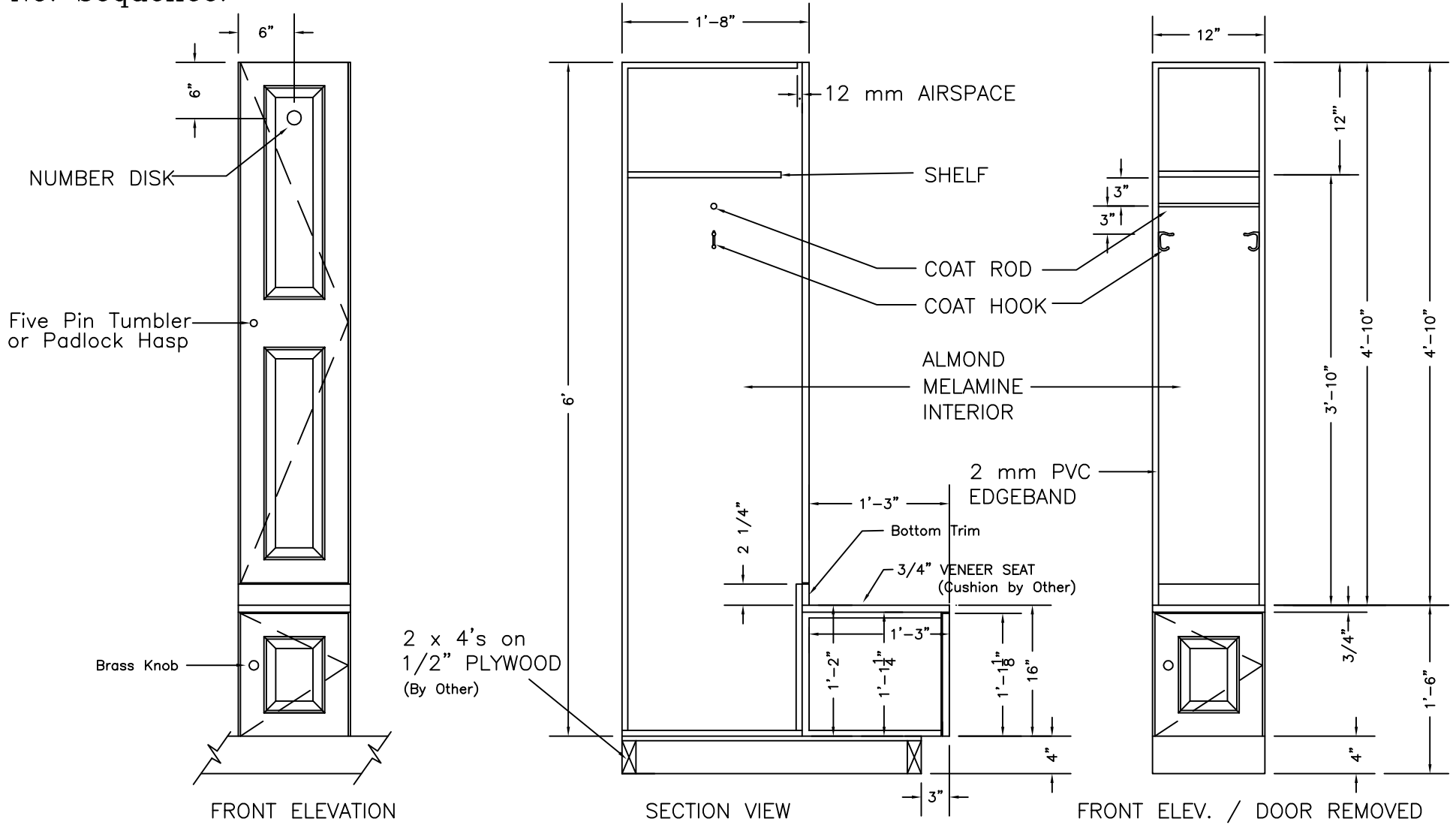


Locker Doors:  
 Finish:  
 Edgeband:  
 Lock:  
 Hardware:  
 No. Sequence:

QTY.: \_\_\_ Locker at Men's Rm.  
 \_\_\_ Locker at Women's Rm.



**HOLLMAN, INC.**  
 2118 Parkside Ave., Irving, TX 75061  
 P: 972/313-1121 F: 972/313-1125

Model A/Custom  
 w/ Shoe Box Bench Seat

DATE:	APPROVED:	DRAWN BY:
PROJECT:		
Scale: 3/4" = 1'-0"		DRAWING NO. A-wb